



Cygnat Aerospace Corp., P.O. Box 6603, Los Osos, CA 93412
WWW.CYGNAT.AERO

Beech Flight Desk Chart Holder

INSTALLATION

1. Remove the screws affixing the top half of the Existing Chrome Collar (Item No. 6) to the control column.
2. Place the Column Mount (Item No. 3) onto the top half of the existing chrome collar and ensure that the mounting holes are aligned.
3. Place the #10 Lock Washers (Item No. 5) onto the 10-32 x 5/8 Cap Screws (Item No. 4).
4. Insert the 10-32 x 5/8 Cap Screws into the mounting holes on the Column Mount, through the existing chrome collar, and into the control column. Ensure that the screws are tight (20-25 in.lbs).

IMPORTANT: DO NOT USE DIFFERENT LENGTH SCREWS.

THE SCREWS PROVIDED WITH THE BEECH FLIGHT DESK CHART HOLDER HAVE BEEN SPECIFICALLY SELECTED. LONGER LENGTH SCREWS WILL INTERFERE WITH AILERON OPERATION.

OPERATION

The Beech Flight Desk Chart Holder has been designed to provide a simple means of removing the Writing Surface (Note: The Writing Surface is attached to the Hinge Plate but is not shown in the drawing).

To remove the Writing Surface rotate it up at least 15 degrees from the horizontal plane and slide it out toward the copilot.

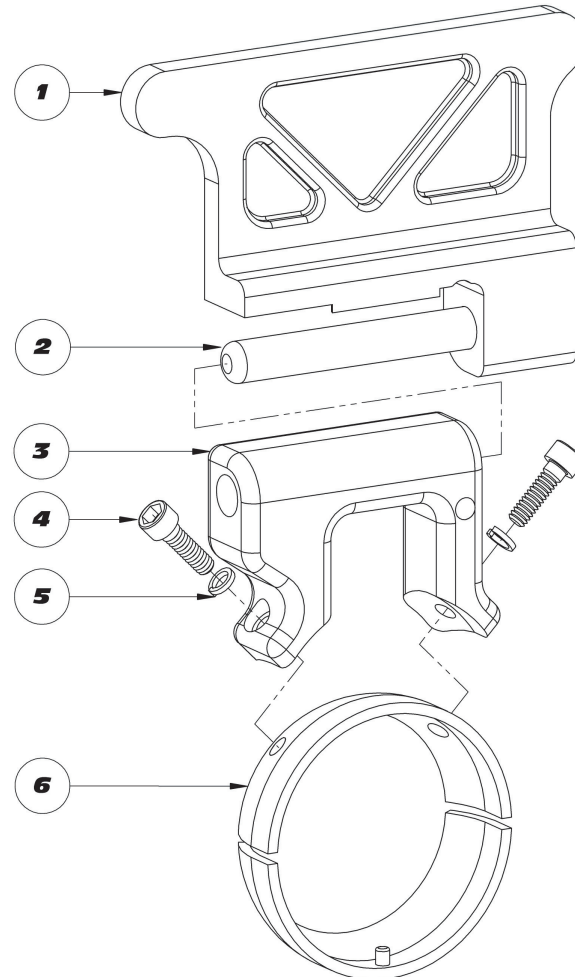
To attach the Writing Surface to the Column Mount insert the Hinge Pin into the Column Mount. Slide the Hinge Pin and Writing Surface to the left with the Writing Surface held between the horizontal and vertical positions.

After the Hinge Pin is fully inserted into the Column Mount allow the Hinge Plate to rotate down. The rivet protruding from the Column Mount will engage the slot on the Hinge Plate and prevent the Hinge Pin from disengaging.

CONTINUING AIRWORTHINESS STATEMENT

The installation of the Beech Flight Desk Chart Holder constitutes a minor alteration. It is up to the installer to determine compatibility with any existing equipment. The installed components must not interfere with full control travel or operation of any installed equipment. The Existing Chrome Collar (Item No. 6) and the Cap Screws (Item No. 4) should be inspected for proper installation, security, and damage.

BEECH FLIGHT DESK CHART HOLDER



ITEM NO.	QTY.	DESCRIPTION
1	1	HINGE PLATE AND WRITING SURFACE (NOT SHOWN)
2	1	HINGE PIN
3	1	COLUMN MOUNT
4	2	#10-32 X 5/8 CAP SCREW
5	2	#10 LOCK WASHER
6	1	EXISTING CHROME COLLAR (NOT INCLUDED)